



London Showstoppers

By public demand we are proud to present our Show Break weekends in London, why not become one of the growing band of people that travel with us to see the Top Shows in the West End. We may be a little more expensive than others but our Hotels are always London based, mostly of 4 Star Standard and we always try to obtain the best seats available at the time in the Theatres - Not in the rafters like some - With virtual door to door service in London let us take the pressure whilst you enjoy the show. Even the streets of London are memorable, they are well-known through English fiction and biographies of great men of the past who lived and walked on them. The West End, running west from Covent Garden to Oxford Street, is the main shopping and entertainment area. The West End is known as 'Theatre-Land', the home of many of the World's greatest shows, our following itineraries offer a chance for a weekend break including the opportunity to take in the sights of the city, enjoy the many shops and markets or take in one of the popular shows in the West End.

Look What's Included!

- 1 Night Bed and English Breakfast.
- Best Price Available P.M. Show Tickets.
- Sunday Morning Visit to Covent Garden.
- Transport and Entrance to Show or Venue.

OUR OVERNIGHT HOTELS

All our overnight Hotels are Four Star standard, with all the facilities that you would expect from top class London Hotels. They Include: The Hilton Hotel, Canary Wharf, The Crowne Plaza Docklands, The Holiday Inn Bloomsbury and The Holiday Inn Regents Park.

THE HILTON HOTEL, CANARY WHARF ★★★★★

The Hilton London Canary Wharf Hotel is at the heart of Canary Wharf's bustling business, café and shopping scene. Treat a friend to dinner at the Hilton London Canary Wharf Hotel's contemporary Cinnamon Restaurant and Bar or try one of its signature cocktails. Maybe make use of the sauna or the gym at the Hotel's health club. Massage is available. The Hotel Has a Lift. All Bedrooms are Air Conditioned and have Private Facilities, Satellite Television, Hair Dryer, Ironing Board, Safe and Tea/Coffee Making Facilities.

CROWNE PLAZA, DOCKLANDS ★★★★★

The Crowne Plaza London Docklands offers contemporary accommodation, style & attention to detail. This Hotel has recently been upgraded to offer even better style and service. The Crowne Plaza Docklands prides itself on offering professional, courteous service. The Hotel houses a contemporary bar and a restaurant and the Quad Club also offers guests a purpose-built health and fitness facility with indoor swimming pool and gym. The Hotel Has a Lift. All Bedrooms are Air Conditioned and have Private Facilities, Telephone, Satellite Television, Minibar, Hairdryer, Bathrobe and Tea/Coffee Making Facilities.

HOLIDAY INN BLOOMSBURY ★★★★★

The Holiday Inn Bloomsbury is in a nice relatively quiet area with a bit of a village feel, it is a modern and stylish Hotel near London's West End. Dining at the Holiday Inn is provided by the Junction Restaurant, while evening drinks can be had at Callaghan's Irish Pub. Junction Bar serves a comprehensive choice of drinks. The Hotel Has a Lift. All Bedrooms have Private Facilities, Satellite Television, Hairdryer, Trousers Press and Tea/Coffee Making Facilities.

HOLIDAY INN REGENTS PARK ★★★★★

Welcome to the Holiday Inn's Regents Park Hotel, a contemporary and stylish Hotel in Central London and is located close to the peace and quiet of one of the capitals best loved parks. The Hotel has a restaurant and bar and can provide for disabled visitors. The Junction Restaurant at the Holiday Inn Regent's Park serves modern British cuisine, light meals and snacks are available in the Junction Bar. The Hotel Has a Lift. All Bedrooms Come Equipped with Private Facilities, Radio Mini Bar, Hairdryer, Tea/Coffee Making Facilities and a Refrigerator.

ITINERARY

Saturday

Morning departure, travel to London and check-in, our service then includes transfers to and from Hotel and Theatre with free time in the city.

Sunday

The coach transfers us to Covent Garden, famous for its arcades and street players, we depart after lunch, arriving home early evening.



The Sound of Music

London Palladium, Stalls 1 Tickets, Saturday 7.30 p.m.

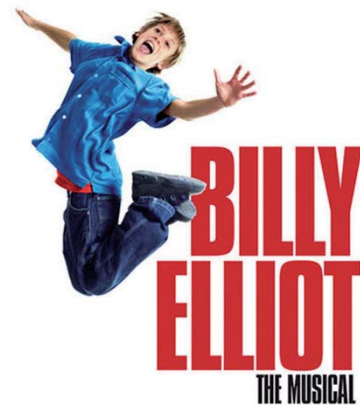
11th - 12th October

Hilton Hotel, Canary Wharf with English Breakfast

2 DAYS £178

Single Room Supplement £25.00 Insurance £8.00

Based on the uplifting true story of the Von Trapp family, The Sound of Music tells the story of Maria, the spirited young woman who leaves the convent to become governess to the seven children of Captain von Trapp, an autocratic widower whose strict household rules leave no room for music or merriment. Through her youthfulness and zest for life she brings happiness and love to the Von Trapp family. The Sound of Music was the last partnership between Rodgers and Hammerstein, becoming one of the most successful Oscar-winning film musicals of all time.



Billy Elliott

Victoria Palace Theatre, Stalls/Dress Circle Tickets

Saturday 7.30 p.m.

8th - 9th November

Hilton Hotel, Canary Wharf with English Breakfast

2 DAYS £187

Single Room Supplement £25.00 Insurance £8.00

Set in the North East, Billy Elliot is a funny, heart-warming and feel-good celebration of one young boy's dream. This original story captured the hearts of people around the world when the movie was released in October 2000. This poignant film broke box office records worldwide and was nominated for a raft of awards including 3 Golden Globes, 3 Oscars and 13 Bafta awards. The original award winning team from the film: director Stephen Daldry, writer Lee Hall and choreographer Peter Darling are joined by music legend, Elton John, the most celebrated UK singer-songwriter of the last 30 years, to create the most anticipated musical of the decade.